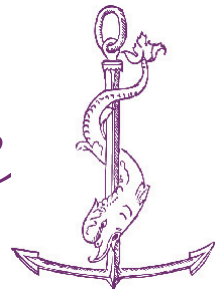


The Pipeline

An Information Publication of Beta Phi Mu

SPRING 2011



Beta Phi Mu

Executive Board

OFFICERS

John M. Budd
President

Marie L. Radford
Vice President, President-Elect

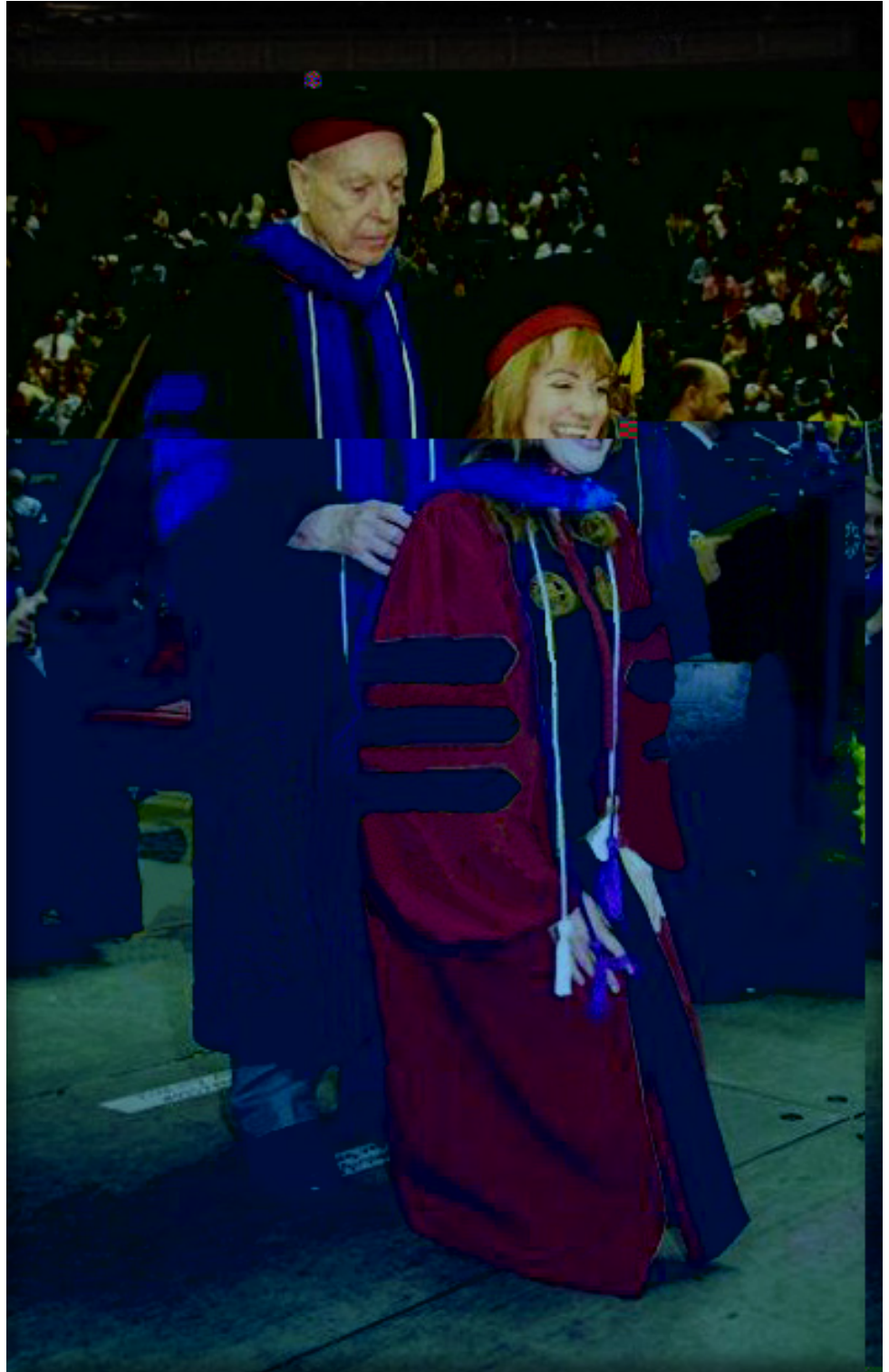
Sue Stroyan
Past President

DIRECTORS

Daria DeCooman
George R. Gaumond
Beth Paskoff
Sue Searing
Shannon Tennant
Diana L. Vogelsong

DIRECTORS-AT-LARGE

Kaye Bray
Amanda Ros



HISTORY IN THE MAKING: Dr. Theodore R. Pfarrer (Beta Phi Mu Gamma Chapter 1975) hoods his daughter, Dr. Janet L. Capps (Beta Phi Mu Gamma Chapter 2002) during the Florida State University April 30, 2011 Spring Commencement ceremony. That makes two generations of Beta Phi Mu members from the same institution and chapter!

BΦM

INTERNATIONAL LIBRARY & INFORMATION STUDIES HONOR SOCIETY

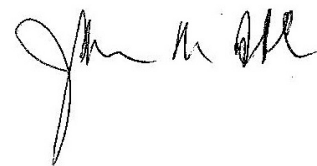
The President's Page

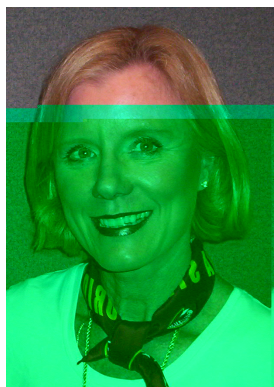


John M. Budd, Professor

Greetings Beta Phi Mu-ers. When we gather in New Orleans we'll have just welcomed in summer but, speaking as a native of Louisiana, it will have felt like summer for awhile. The weather will have warmed up enthusiasm for things that Beta Phi Mu and its chapters have been doing. Each time I have the opportunity to hear about the great things that chapters have going on, I'm encouraged by the commitment and energy our members demonstrate. As has been reported in these pages, we've even been able to welcome a couple of new chapters into our fold. I do want to take advantage of the chance this message offers to remind everyone that the Beta Phi Mu Headquarters is around to assist with chapter activities. Organizational matters are certainly on the list of things Headquarters can help with. Our great people, Executive Director Christie Koontz and Program Director John Paul Walters, are fabulous and are willing to share ideas about events, speakers, and other things that can enliven members' experiences. In a very real sense, we're in this together, so whatever suggestions you may have that can make chapters and Beta Phi Mu visible in people's careers, don't hesitate to let us know.

I come to Beta Phi Mu as an educator (and have been one for 24 years now, hard as that is to believe). This gives me a particular perspective on this honorary society and what it means to people. I can attest that it's gotten increasingly difficult for educators to nominate graduates for initiation. The abilities and commitment of people are higher than I've ever seen them. For this reason, nomination is viewed by graduates as a genuine honor and they can take legitimate pride in becoming a part of this organization. Many students have nomination as a goal even before they graduate. While it's certainly not for initiation into Beta Phi Mu alone, students are also very active as aspiring professionals. It's our duty as educators—and as supporters of Beta Phi Mu—to create as many opportunities for participation and learning beyond the classroom (physical or virtual). I'm confident this is occurring everywhere. I want to close by inviting everyone to the Beta Phi Mu General Assembly G-ALA, which will be held on Saturday, June 25th from 3:30 - 5:30 PM in conjunction with the ALA Annual Meeting in New Orleans. We will gather in the French Quarter in the Acadia Suite of the Royal Sonesta Hotel, 300 Bourbon Street. I hope you will join us for a combination of business, pleasure, networking, seeing old friends and making new ones. Plus we will be installing two new Beta Phi Mu chapters and holding an initiation ceremony. And let's not forget a fabulous spread of food and beverages. I look forward to meeting you there. *Laissez les bon temps roulez.*





Executive Director's Report *2007-2011*

Christie Koontz, Ph.D.

Three new chapters! In the last few years we have seen growth and progress within Beta Phi Mu. Three new chapters developed including Beta Beta Mu at Valdosta State University (Valdosta, GA), Beta Beta Nu at University of North Texas (Denton, TX), and most recently Beta Beta Xi at St. Catherine University (St. Paul/Minneapolis, Minnesota). This is exciting as new chapters have not 'happened' in twenty years!! Beta Beta Nu and Beta Beta Xi will be officially installed as new chapters, along with its members, in New Orleans at the Beta Phi Mu General Assembly G-ALA, which will be held Saturday, June 25th from 3:30-5:30 PM at the Acadia Suites in the Royal Sonesta Hotel on Bourbon Street in the French Quarter.

Also during this period, the national office has streamlined its operation with a solid, functioning, up-to-date website, internal practices, and a *How To Do Beta Phi Mu* operations manual. Additionally, we are fortunate to have Bob Branciforte—with his extensive background in finance and accounting—serving as Beta Phi Mu Treasurer. Our online newsletter -- *The Pipeline* -- is published twice a year and filled with lots of information as well as chapter activities. Thanks, JP, for the newsletter. It truly acts as our communications conduit to members and chapters.

More scholarship money. The Executive Board, under the direction of past presidents Nancy Zimmerman and Sue Stroyan and now our current president, John Budd, has revamped our committee structure offering new vision for the future. One of the most tangible results is that the Executive Board increased the scholarship amounts which almost doubled this year's applicant pool. The latter was facilitated through a new online scholarship application platform from ScholarSelect.

How many of us are there? Since 1948, Beta Phi Mu has put its scholarship and leadership stamp on students through their earned GPA and subsequent faculty vote of recognition to those within the top 25% of their class for leadership and lifelong potential. Our database now holds over 25,000 Beta Phi Mu members.

What's next? We all need, as individuals, to keep Beta Phi Mu going at the chapter and national level. And this is at a minimum. But more importantly, we must move Beta Phi Mu forward with LIS schools into the future. In the summer of 2012, the Beta Phi Mu contract with Florida State University ends. The process during the year leading up to this will result in Beta Phi Mu headquarters moving to new host institution. This will require discussion, bids, and offers. Perhaps your institution might like to host BPM next? All members, past and present, need your consideration. All the concerns of an honor society will move with it. While, in recent years, some significant improvements have been made, a new vision will create new facets and values. Let us hear from you and hopefully we will see you in New Orleans. Please contact Dr. John Budd (BuddJ@missouri.edu) or me (Christie.Koontz@cci.fsu.edu) if your institution is interested in moving Beta Phi Mu into the future.

A handwritten signature of Christie Koontz in black ink, written over a set of horizontal lines.

Chapter News

The **EPSILON CHAPTER @ UNC-CHAPEL HILL** held its annual dinner and induction ceremony on Tuesday, May 3, 2011 at 6:00 p.m. at Maggiano's in Durham, NC. This year we had 21 new initiates and were pleased to welcome back one of last year's inductees as our speaker. John Blythe is the Special Projects and Outreach Coordinator for the North Carolina Collection at UNC-CH.

Last year's induction was likewise a great success. On May 6, 2010, we inducted 23 members and presented scholarships to two current SILS students, Michael Nutt and Casey Rawson. We consider these scholarships to library and information science students to be one of our primary missions, and we are grateful to our membership for their continued financial support.

We were honored to host Kevin Cherry from the Institute of Museum and Library Services as our induction speaker. Kevin has three degrees from UNC (BA, MSLS, and PhD) and is a member of the Epsilon chapter – note his Carolina blue tie! Kevin, a self-described “pack rat for the common good”, spoke about the importance of libraries as memory institutions and their role as stewards of the communal memory.

More information about and photos of the Epsilon chapter can be found at our website: http://tiny.cc/BPM_Epsilon_2010. *Submitted by Shannon Tennant, Epsilon Chapter Secretary/Treasurer.*



Kevin Cherry, from the Institute of Museum and Library Services, addresses the new inductees and membership of Epsilon Chapter at the 2010 Epsilon Chapter induction ceremony.

BΦM

BΦM
INTERNATIONAL LIBRARY & INFORMATION STUDIES HONOR SOCIETY

Chapter News

The **IOTA CHAPTER**, representing The College of Information Science at the University of Maryland and The Catholic University of America's School of Library and Information Science, held its Annual Membership Meeting and Induction Ceremony at the headquarters of National Public Radio in Washington, DC. on Monday March 28, 2011.

The keynote speaker was Joan K. Lippincott, Associate Director of the Coalition for Networked Information, a joint program of the Association of Research Libraries (ARL) and EDUCAUSE. Her presentation was titled "New Opportunities for Digital Content in Teaching and Research." The speaker challenged the audience to find better strategies to integrate digital content into programs and communicate what is available to users. Ms. Lippincott suggested librarians collaborate with faculty for better opportunities in teaching and learning. Students would apply information literacy and research skills to video and multi-media projects like a 3-D fly through City of Troy.

Following the speaker, President Mark Brzozowski began the initiation ceremony with each officer reading a portion the ceremonial script. Each Beta Phi Mu inductee signed the Great Roll after receiving their certificate. New inductees included: From SLIS, CUA- Susan R. Bloom, Mary E. Kurspahic, Sarah I. Scruggs. From CIS, UMD- Dennis P. Nagle, Nicholas A. Taylor, and David K. Gayer.

During 2010-11, the IOTA Chapter Board of Beta Phi Mu voted to offer two \$1,000 scholarships to students from each university. From CUA SLIS, the recipients were Rose Asuquo and Helen Horn-Mitchen. Rose currently works for the DC Public Library and desires to work with people with disabilities. Helen's interests include law librarianship and she works part-time at the Judge Kathryn J. DuFour Law Library. From UMD SLIS, the first recipient was Cassandra Berman. Currently, Cassandra is a Graduate Assistant in the Special Collections of the Performing Arts pursuing both a dual degree in History and Library Science. The second recipient was Stacy Melissa Kitsis. Stacy works in the User Education Services at the UMD Library.

President Mark Brzozowski presided over the meeting and led the election of the new officers. Members approved by acclamation Sue Ann Orsini for Vice President/President Elect and Karen Nimerick for a second term as Secretary. Sue Ann is the Legislative Librarian at Fried, Frank, Harris, Shriver & Jacobson, LLP. Karen is an instructor in the User Services department of the Defense Technical Information Center.

President Brzozowski passed the gavel to Jeffrey Prater, who encouraged members to volunteer for the board and at the upcoming Library of Congress Book Festival on September 24th and 25th. President Prater expressed interest in exploring new communication tools for the IOTA Chapter and encouraged members to offer suggestions. *Submitted by Jeff Prater, Iota Chapter President*



IOTA CHAPTER PHOTOS ➡

Chapter News



[L-R]: Iota Chapter President Mark Brzozowski, Scholarship Winners: Cassandra Berman, Stacy Kitsis, Helen Horn-Mitchem, and Rose Asuquo.



Joan K. Lippincott presents "New Opportunities for Digital Content in Teaching and Research"



Diane Schnurpusch and Lilly McGovern enjoy the reception after the meeting.

Chapter News



[L-R]: 2011 Inductees Susan Bloom, David Gayer, Nicholas Taylor (back), Mary E. Kurspahic, Dennis Nagle, Sarah I. Scruggs.



[L-R]: Outgoing Past President Diana Vogel song. 2011-12 Officers: Mark Brzozowski (Past President), Jeffrey Prater (President), Sue Ann Orsini (Vice President/President Elect), John Coogan (Treasurer), Karen Nimerick (Secretary).

Chapter News

ALPHA CHAPTER's 2010 Initiation and Annual Meeting was convened by Georgeann Burch, chapter president, at 11:00 A. M. November 6, 2010, at Kennedy's in Urbana, Illinois. Thirty-two individuals were initiated of whom nine were present. After the initiation, the meeting continued with a business meeting which included minutes of the 2009 meeting and treasurer's report for the past year. A portion of the latter was a motion to give four thousand dollars (\$4,000.00) to the University of Illinois Foundation for use by the Graduate School of Library and Information Science (GSLIS) to support student participation in the Alternative Spring Break program in 2011. This passed without dissent. This program makes possible student internships in cooperating institutions during the University's Spring Break week. It fills a genuine need in the lives of numerous students, is quite popular and is in need of support as institutional support is quite tight. Julie Derden was elected Vice President/President Elect succeeding Peggy Glatthaar who became President of the chapter at the conclusion of this meeting. The meeting adjourned for lunch after which Fred Schlipf, Professor Emeritus in GSLIS, spoke entitling his presentation "Maintaining Essential Public Service in Modern Libraries". Mr. Schlipf's presentation was both thoughtful and entertaining being based upon his experiences as a teacher, as a public library administrator and as a consultant in library building planning. *Submitted by William T. Henderson, Alpha Chapter Secretary.*



Since its formation in the summer of 2010, the **BETA BETA NU CHAPTER @ UNIVERSITY OF NORTH TEXAS** has inducted 41 LIS graduates into Beta Phi Mu. Our first chapter induction ceremony in August was attended by the dean of our college, the chair of our department, and many honored Beta Phi Mu guests. The chapter has also given out \$1,000 in scholarships to LIS students who embody the values of our honor society. *Submitted by Stephanie Noell, Beta Beta Nu Chapter Assistant.*

At Florida State University's **GAMMA CHAPTER**, the majority of LIS students in the ALA-accredited master's program at The Florida State University's College of Communication & Information are distance students. Because most of Gamma Chapter's members earn their degrees online, we have the challenge of building our community at a distance. We are focusing our outreach efforts on current members, potential members, and others:

- ❶ We have developed a Facebook group for disseminating information and collecting feedback from our members: Beta Phi Mu-Gamma Chapter, Florida State University. We can use it as a discussion forum as well.
- ❷ We are working to make current students aware of Beta Phi Mu and Gamma Chapter prior to their graduation by presenting at their orientations; collaborating with LIS student organizations, such as the FSU Student Chapter of the American Library Association; and sending e-mails to those about to graduate.
- ❸ We invite faculty, LIS professionals, staff, and retirees to our homecoming celebration, which follows our annual meeting.

During the last year, we conducted a survey to determine how we could provide greater benefits to our members. To gather their opinions on what events, interactions, information, scholarships and awards they would like to see, our officers developed a ten-question survey. We also collected demographic data on when responding members were initiated, where they live, and whether they planned on physically or virtually attending our annual meeting.

We distributed the survey online via e-mail and our Facebook group, and later included a print version with a mailing to all current and recent members. We received approximately 60 responses, split evenly between online and mailed responses. Results were as follows:

(continued on next page)

Chapter News

GAMMA CHAPTER SURVEY RESULTS

❶ Participating members ranged in initiation dates from as early as 1964 to our newest members. The greatest concentration was from the last decade, particularly the last four years (62% of responding members); this was especially true of online respondents. It was not surprising that our most active members are those who have recently joined, but we were encouraged to see longer-term members still participating.

❷ Our members were most interested in information and interaction/networking opportunities; the former ranked highest for those responding via mail, the latter ranked highest for those responding online. Information on BPM events (72%) and news (67%) were most desired. Job postings and alumni news (each 63%) were also highly desired, while all other categories asked about scored above 50%, showing the importance of information to our members.

❸ Interaction and networking opportunities with other Beta Phi Mu members (72%), other library and information professionals (68%), and alumni (58%) were of interest; 62% of members also wanted general professional networking opportunities. We intend to continue promoting interaction via our Facebook group, at our annual meeting, and are considering other ways to address our members' desire for networking.

❹ While events were not as popular, members were interested in online webinars (68%) and professional networking (65%) with speakers and researchers from the LIS professions. Gamma chapter's annual meeting also scored above 50%. Online respondents also suggested virtual meeting opportunities and a LinkedIn group, both of which we are strongly considering. These results will also help us better plan future annual meetings and events, both online and face-to-face, for our members.

❺ Scholarships and awards were desired most highly for research activities (73%), professional activities (72%) and for current members (58%). As a result, we plan to introduce awards for current members and alumni who have exemplified leadership in their service, research, and professional activities.

❻ Finally, there were a couple of requests for paying membership dues via PayPal rather than cash or check, which we are considering. In addition, online respondents welcomed the ability to interact online and watch our annual meeting via webcast, asking questions via e-mail or Facebook. These efforts, greatly appreciated by many, allow our members to be able to participate and stay in touch from a distance, which we are finding critical in serving our widespread member population.

We have found our membership survey to be very helpful in determining how Gamma Chapter can provide value to our members, particularly in prioritizing our efforts to serve them. We feel our efforts going forward will be greatly improved by the feedback we received and we thank our members for participating and helping us out! We welcome chapters interested in using or adapting our survey to contact us for a copy (bpm-gamma@fsu.edu). We also welcome chapters in similar circumstances to share their ideas with us.

We look forward to seeing other BPM members at the General Assembly G-ALA at ALA in New Orleans this summer (Saturday, June 25th from 3:30-5:30 PM)!
Submitted by Gamma Chapter officers: Phyllis Hytinen, Bob Branciforte, Adam Worrall and Patrick Milas.

*Aliis
inserviando
consumor*

*Consumed
in the service
of others*

Chapter News

Greetings from **PI LAMBDA SIGMA CHAPTER** at the original iSchool, Syracuse University!

Spring took its time returning to Central New York and with it planning for our 52nd Annual Meeting and Initiation as a Beta Phi Mu affiliate. As the oldest library honor society in the U.S., May 14 marked our 108th Chapter meeting. Our guest speaker for the event was Stephanie Miner, SU Class of '92, Mayor of the City of Syracuse and the first woman to hold this position in any of the "Big Five" cities of New York State. Her topics included the innovative "Say Yes To Education" program in the Syracuse city schools, whereby a qualifying graduating senior may attend SU or other Say Yes college tuition-free. As always, our annual meeting took place on Graduation Weekend.

We are pleased to announce that our endowments allowed us to award two Joseph and Marta Dosa Scholarships this semester, equal to tuition for one 3-credit course to each recipient. We also awarded one Florence Van Hoesen Loan, an interest-free loan to cover college expenses as the recipient wishes. We have revised and expanded our collaboration on these awards with the iSchool and are pleased with the increased response. Our Marion Mullen Travel Award for 2011 goes to Chapter member Ellen Owens, helping her attend Summer ALA in New Orleans and the annual National Beta Phi Mu General Assembly meeting on June 25th.

Current Executive Board members are: President Linda Galloway, SU Libraries; Past President Abby Kasowitz-Scheer, SU Libraries; Recording Secretary Brian Dobreski, SU Libraries; Corresponding Secretary Susan Slenker, retired school librarian; Treasurer Suzanne Preate, SU Libraries; Membership Chair Christine Demetros, SU/Barclay Law Library; Scholarship Chairs Gary Maggi, health sciences librarian, and Valarie Massulik, Onondaga County Public Library; and Board members Margaret Backus, Northern Onondaga Public Library; Carole Kupelian, retired school librarian; and Ellen Owens, Crouse-Irving Memorial Hospital Medical Library.

Together, we manage the Chapter's mission of extending financial support to the most academically-gifted yet challenged iSchool students in the Library and Information Science graduate degree programs. Our Faculty Advisor is Dr. Megan Oakleaf.

Our website is < <http://bpm.syr.edu/> >. Visit us online, or follow us on Twitter. *Submitted by Susan Slenker, Corresponding Secretary, jslenker@twcnj.rr.com*



"The library connects us with the insight and knowledge, painfully extracted from Nature, of the greatest minds that ever were, with the best teachers, drawn from the entire planet and from all our history, to instruct us without tiring, and to inspire us to make our own contribution to the collective knowledge of the human species. I think the health of our civilization, the depth of our awareness about the underpinnings of our culture and our concern for the future can all be tested by how well we support our libraries." ~Carl Sagan, *Cosmos*

Dates & Deadlines



BETA PHI MU

2011 General Assembly G-ALA

NEW ORLEANS, LA

Royal Sonesta Hotel • Acadia Suites

300 Bourbon Street

Saturday, June 25th • 3:30-5:30 PM

Business Meeting, Chapter Reports, New Member Initiation Ceremony, New Chapter Installation Ceremony, Election of Officers, 2011 Scholarship Recipients Announced, Face2Face Networking, Catered Reception

Be Sure To Vote!

Beta Phi Mu is currently holding an online election for Vice President/President-Elect and Director-At-Large. Beta Phi Mu members may cast their votes any time up until midnight, June 20, 2011. The link to the ballot is:

<http://www.beta-phi-mu.org/Election>

Election results will be announced at the Beta Phi Mu General Assembly G-ALA on Saturday, June 25th at the Royal Sonesta Hotel in New Orleans, LA between 3:30-5:30 PM.

Social Networking at Beta Phi Mu

Did you know that Beta Phi Mu is on Facebook and LinkedIn? Due to changes at Facebook, we have recently changed from being a “group” to a “page”. The link to our new page is: <http://www.facebook.com/pages/Beta-Phi-Mu-International-Library-Information-Studies-Honor-Society/162406473822270>. Make sure you “like” us in order to keep up with the latest news, events, and information from national headquarters. Additionally, we are compiling information on BPM chapters on Facebook. To this end, if your chapter has a page and you are an admin of that page, like us so that we can like you back. If your chapter is remaining a group, please post to our page or drop us a line at betaphimuinfo@admin.fsu.edu so that we can add your chapter’s Facebook presence to our page.

Our LinkedIn group address is: http://www.linkedin.com/groups?about=&gid=36230&trk=anet_ug_grppro. Here you can find discussions, members, and other information concerning Beta Phi Mu.



BΦM

INTERNATIONAL LIBRARY & INFORMATION STUDIES HONOR SOCIETY

2011 Scholarship Update



*Sue Searing, Chair
Scholarship Review Committee*

Beta Phi Mu's mission is to recognize and encourage scholastic achievement in the field of LIS. Toward that end, four competitive scholarships are awarded annually: the Sarah Rebecca Reed Scholarship for a student beginning LIS studies; the Blanche E. Woolls Scholarship for a student beginning LIS studies with the intention of pursuing a career in school library media service; the Harold

Lancour Scholarship for foreign study; and the Frank B. Sessa Scholarship for continuing professional education. In addition, up to six Eugene Garfield Doctoral Dissertation Fellowships are awarded each year. The criteria and application instructions for the various scholarships can be found on the BPM website: <http://www.beta-phi-mu.org/Scholarships/scholarships.php>. Applications are accepted each year from November 15 to March 15 and scholarship recipients are announced in late June.

This year, Beta Phi Mu automated the scholarship application process. While a few kinks remain to be ironed out, contracting with ScholarSelect (<http://www.scholarselect.com>) has proved to be a very positive step. ScholarSelect is a web-based platform used by many small foundations and other grant-making organizations. BPM Program Director John Paul Walters worked with Scholarship Review Committee chair Sue Searing and the staff at ScholarSelect to tailor the program to BPM's needs. Applicants used the web interface to create an account, input required data and essays online, upload transcripts and other documents, and contact references to request letters (also submitted online). The system enabled follow-up messages and reminders. After the deadline, evaluators logged in to review the applications and rank them. The members of the 2011 Scholarship

Committee are Sue Searing (chair), Daria DeCooman, George Gaumond, Amanda Ros, Monica Moore, and Nicole Stroud.

At this writing, the review of applications is still underway. According to Sue Searing, "compared to the old paper-based system, the online process makes it a breeze to assess, compare, and rank applications." It's also easier for applicants to initiate the process. This year 206 people established accounts and submitted at least some data. At deadline time, however, quite a few applications were still incomplete. John Paul Walters contacted applicants who had not followed through to complete their applications, and several were gracious enough to tell him why. Technical problems were rare, and the reported reasons for non-completion were sufficiently varied and personal to rule out any systematic biases in the process. However, the committee will be looking in the coming year at ways to improve the completion rate. In addition, now that the online process has been instituted and tested, the committee will focus its attention on better outreach and publicity in the future. More than \$25,000 is available for BPM scholarships and fellowships. Please, help us spread the word!

"More than \$25,000 is available annually for Beta Phi Mu scholarships and fellowships."

Scholar  Select

BΦM
INTERNATIONAL LIBRARY & INFORMATION STUDIES HONOR SOCIETY

Dorian Lange • 2011 Recipient

Harold Lancour Scholarship For Foreign Study



Dorian Lange

APPRECIATION

I am extremely grateful for the generous support that Beta Phi Mu provided via the Harold Lancour Scholarship for my dissertation research about the censorship practices in the Republic of Korea's (known in the West commonly as South Korea, but hereafter abbreviated as ROK) public libraries. The funds allowed me to

hire an interpreter to translate for me during my observation and participation research periods, and then translate for me during my interviews with ROK Librarians. The scholarship also allowed me to provide the necessary incentives (department store gift cards) to attract ROK library professionals.

CONTEXT: ROK LIBRARIES

In order to appreciate my studies specific to censorship in ROK public libraries, it is first necessary to establish an understanding of the public libraries in the ROK. Libraries in the ROK are very different from libraries in the United States. All libraries in the ROK, be they school, public, special, or academic have the same mission: education. (To demonstrate this point further – all ROK public libraries have full school cafeterias.) In the public library where I conducted my research, over 60 percent of the library's collection is devoted to scholarly materials. Libraries are not places for enjoyment, personal enrichment, etc. They are places to study. To this end, libraries are totally quiet. Even the children's section is almost silent. Laptops, cell phones, and all other noise making devices are strictly prohibited except in limited, designated areas. The ROK's public libraries are largely extensions of public schools.

RESEARCH

Institutionally, public libraries should be dedicated to protecting and promoting users' intellectual freedoms. Public libraries are supposed to protect the rights of individuals to read, write, and access information of their choosing by rejecting censorship. According to UNESCO's Public Library Manifesto, this is a universal obligation of all public

libraries, no matter their country of origin. Censorship in public libraries inhibits the natural information behaviors of users and as such, is destructive to critical thought – thereby weakening the structure of democratic systems.

Unfortunately, ROK public libraries practice both ideological and protectionist forms of censorship. This is problematic, but especially so when one realizes that the ROK's democracy is young (only becoming a democracy in 1993) and still fragile.

ROK public libraries censor information, both online and in their physical collection related to North Korea (the DPRK), homosexuality, and online protest and democratic assemblage. Further, the meeting rooms of public libraries do not support assembly, but instead requests for use of these rooms must be approved based on the ideological purpose of its intended use.

FURTHER STUDY

In my future work, I will maintain that the allegiance of the ROK's public libraries' must be to their public. I will strive to support the fact that all public libraries have a professional and ethical obligation to insure that everyone has unobstructed access to information. I will argue that the ROK's public libraries should be a protected space where individuals can have access to a multitude of resources so that they have the means to question and investigate authority, thus making the ROK accountable to the populace it serves.

In order to accomplish my aims, I will utilize the data I obtained during my research to study the relationship between the censorship in the ROK's public libraries and the evolution of the country's democracy. Specifically, I will analyze how threats to intellectual freedom, privacy, and assemblage in the ROK's public libraries effect the participation of citizens in their own government.

CONCLUSION

Again, I am so very grateful for the generous support I received from Beta Phi Mu via the Harold Lancour Scholarship for Foreign Study. Because of this support, I will not only finish my dissertation, but will also strive to make a meaningful contribution to our field.

BΦM

INTERNATIONAL LIBRARY & INFORMATION STUDIES HONOR SOCIETY

A Good Time Was Had By All!



Beta Phi Mu Executive Board members and guests enjoying a break from conference responsibilities at an evening social and historical tour hosted by Daria DeCooman at her home in San Diego, CA.

[Front Row L-R]: Diana Vogel song, Amanda Ros, John Budd, Beth Paskoff

[Back Row L-R]: Museum Host, George Gaumond, Christie Koontz, Blanche Woolls, Sue Searing, Christine Jenkins, Corinne Jorgensen, Museum Host

*Aliis
inserviēdo
consumor*



*Consumed
in the service
of others*

www.beta-phi-mu.org

Dr. Christie Koontz, Executive Director • John Paul Walters, Program Director & Newsletter Editor
Comments or Suggestions? Email: betaphimuinfo@admin.fsu.edu

BΦM
INTERNATIONAL LIBRARY & INFORMATION STUDIES HONOR SOCIETY